

MARIN COUNTY HAZARDOUS & SOLID WASTE
MANAGEMENT JOINT POWERS AUTHORITY

AB 939 LOCAL TASK FORCE

Wednesday, August 7, 2013
Northgate Mall Community Room
5800 Northgate Drive, Suite 200
8:30 – 10:00 AM

AGENDA

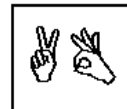
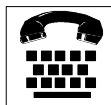
Call to Order.

- 1) Open Time for Public Comment
- 2) Approval of the June 5, 2013 JPA Local Task Force Minutes (Action)
- 3) Presentation by Leslie Bilbro – Goodwill of San Francisco, San Mateo, and Marin Counties (Presentation)
- 4) Updates from LTF Subcommittees (Information)
- 5) Staff Report on Recent and Ongoing Activities (Information)
- 6) Open Time for Member Comments (Information)

The next scheduled LTF Meeting is September 4, 2013 at 8:30 AM.

The full agenda including staff reports can be viewed at:
<http://zerowastemarin.org/who-we-are/2013-jpa-agendas-and-minutes/>

F:\Waste\JPA\LTF\AGENDA\13-06-05.doc



All public meetings and events sponsored or conducted by the County of Marin are held in accessible sites. Requests for accommodations may be requested by calling (415) 473-4381 (voice) (415) 473-3232 (TTY) at least **four work days** in advance of the event. Copies of documents are available in alternative formats, upon written request.

Contact the County's Waste Management Division, at 473-6647 for more information

2
DRAFT

**MARIN COUNTY HAZARDOUS & SOLID WASTE
MANAGEMENT JOINT POWERS AUTHORITY**

AB 939 Local Task Force Meeting
Wednesday, June 5, 2013
Northgate Community Room
5800 Northgate Dr., San Rafael, Calif. 94903

MINUTES

MEMBERS PRESENT

Loretta Figueroa, Almonte Sanitary District
Russ Greenfield, LGVSD
Delyn Kies, Sustainable Novato
Steve McCaffrey, Redwood Empire Disposal
Renee Goddard, Ross Valley Cities
Alex Stadtner, San Rafael
Joan Irwin, Southern Marin Cities
Dee Johnson, Novato Sanitary District
Dan North, Redwood Landfill
Matt McCarron, City of Novato
Patty Garbarino, Marin Sanitary Service

MEMBERS ABSENT

David Green, Unincorporated Marin County
Jennie Pardi, Conservation Corps North Bay
David Haskell, Sustainable Marin

STAFF PRESENT

Steve Devine, JPA Staff
Alex Soulard, JPA Staff

OTHERS PRESENT

Linda Schanfein, Sustainable Sausalito
Casey Mazzoni, Marin Builders Association
Nancy Mackle, JPA Board Member (Chair)
Madeline Hope, West Marin Ed. Coordinator
Kim Scheibly, Marin Sanitary Svc.

STAFF PRESENT

Call to Order. The LTF Meeting came to order at 8:32AM

1. Open Time for Public Comment

No public comments were heard.

2. Approval of the May 1, 2013 JPA Local Task Force Minutes

Member Irwin identified corrections to the Minutes. M/s, McCaffrey, Irwin to approve the May 1, 2013 LTF Minutes as amended. The motion passed unanimously.

3. Update from JPA Board Chair Nancy Mackle and Selection of Two Appointees to Advisory Positions on JPA Board Outreach Subcommittee

JPA Chair Mackle provided an update on current JPA activities, including the Zero Waste Grants, the Grant Jury Reports regarding the Single Use Bag Ban (Holding the Bag) and waste and waste-to-energy in Marin County (Garbology), the LTF recommendation regarding the development of a JPA five year plan, and fielded questions. Chair Mackle requested two LTF Appointees to fill advisory positions on the JPA Board Outreach Subcommittee. No public comments were heard. M/s Irwin, Stadtner for Members Green

and Kies to fill the advisory position, Member Garbarino as alternate. The motion passed unanimously.

4. Updates from LTF Subcommittees

LTF Members provided updates on the progress made by the Subcommittees since the last meeting noting meeting dates; issues discussed, and spoke about possible future meeting dates. No action was necessary.

5. Staff Report on Recent and Ongoing Activities

Staff provided an update on recent and ongoing activities and reiterated the actions taken at the JPA Board meeting. No action was necessary.

6. Open Time for Member Comments

LTF Members shared various community updates. No action was necessary.

7. Adjourn

MARIN COUNTY HAZARDOUS AND SOLID WASTE MANAGEMENT JOINT POWERS AUTHORITY

Belvedere:
Mary Neilan

Date: August 7, 2013

Corte Madera:
David Bracken

To: Local Task Force Members

County of Marin:
Matthew Hymel

From: Steve Devine, Program Manager

Fairfax:
Garrett Toy

Re: Presentation by Leslie Bilbro – Goodwill of San Francisco, San Mateo, and Marin Counties

Larkspur:
Dan Schwarz

Leslie Bilbro is Director of Donations for Goodwill of San Francisco, San Mateo and Marin Counties. Ms. Bilbro will share information on the background, activities and challenges for the Goodwill organization.

Mill Valley:
Jim McCann

For background, the following narrative *in italics* is an excerpt of the Frequently Asked Questions (FAQ) section of sfgoodwill.org.

Novato:
Michael Frank

How does Goodwill work?

It's pretty simple, really. People donate their gently used stuff to us, we sell it in our stores, and we use the money we raise to open doorways for local people who need jobs but lack job skills and opportunities. We focus on the folks in the greatest need who are ready to transform their lives – offering our participants “a hand up, not a handout.” Last year, we helped more than 700 people find jobs, more than 4,000 people get ready to re-enter the workforce, and hosted 37,000 visits to our One Stop Career Center.

Ross:
Rob Braulik

San Anselmo:
Debbie Stutsman

San Rafael:
Nancy Mackle

Sausalito:
Adam Politzer

Tiburon:
Margaret Curran



(Image courtesy of GoHuman.com)

Is Goodwill a for-profit company or a non-profit agency?

As a unique hybrid called a social enterprise, we defy traditional distinctions. Instead of a single bottom line of profit, we hold ourselves accountable to a triple bottom line of people, planet and performance. While our stores operate very much like a traditional retail operation with balance sheets and performance metrics, we apply this business rigor to drive the

MARIN COUNTY HAZARDOUS AND SOLID WASTE MANAGEMENT JOINT POWERS AUTHORITY

social good of transforming lives. Although we operate within a U.S. economy built on consumption and growth, we encourage reuse to save natural resources, reduce waste and prevent landfill pollution. Even though we are in the business of helping people as a best-in-class social service agency, we produced [over \\$34 million in revenue](#) from our stores, e-commerce and after-market operations in 2010. This funded more than 80 percent of our programs and services, with the balance coming from corporate giving, government and NGO grants, public partnerships, and the financial generosity of individuals who believe in our mission. We are very proud of being hard to classify – and it's part of why we have endured for almost 100 years through boom and bust. Who knows? Perhaps Goodwill is the future of American capitalism.

Who's behind Goodwill?

Learn about our [board of directors](#) and [leadership team](#).

Can anyone get help from Goodwill?

Yes and no. Our One Stop Career Service Center is open to everyone and helps people improve their resumes and find job openings every day. We employ residents of San Francisco, Marin and San Mateo counties in our donations, retail stores, and transportation and operations areas. Our intensive services, however, like classroom learning, computer literacy, on-the-job training and life skills workshops are reserved for those who have personally committed to turning their lives around. Learn more about our programs and [solutions for the Bay Area](#).

Who does Goodwill work with?

While we are a critical part of the social safety net in our counties, we like to think of ourselves more as a trampoline — not just catching people as they fall, but helping them bounce back into better lives. To do this, we partner with a wide range of government, NGO and business partners. Our Back on Track program, for instance, a partnership with the San Francisco District Attorney's Office, offers non-violent first-time drug offenders opportunities to work with Goodwill instead of going to jail. Participants in this program receive 12 months of intensive services designed to help turn their lives around and give back to their community, and we're proud that 90 percent or more of our graduates stay straight compared to the much higher recidivism rate of our penal system.

We also build long-lasting partnerships with local businesses. Through our [employer engagement programs](#), for example, we learn the staffing needs of local companies and tailor our development programs so that our graduates are workforce-ready and set up to succeed at those companies. Learn more about [hiring qualified Goodwill graduates](#).

What happens to people who graduate from Goodwill?

Some of our participants continue to work for us, but many others take their Goodwill skills and training out into the Bay Area workforce. Our Retail Academy, for instance, offers on-the-job training in store management, team development and business economics that prepare its participants for jobs in retail. Our ReCompute business, which transforms donated technology into inexpensive computers and equipment for sale in our stores, also provides [A+ computer training](#) for careers in Information Technology. Our goal is to grow

MARIN COUNTY HAZARDOUS AND SOLID WASTE MANAGEMENT JOINT POWERS AUTHORITY

well-skilled, tax-paying citizens who can afford to live and thrive here while supporting their families.

What things can I donate? What don't you accept?

Find out more about [donating gently used goods to us](#).

Can I claim a tax deduction for donating my goods to Goodwill?

Yes, usually. This should [provide some guidance](#).

Do Goodwill employees get first dibs on donated merchandise?

Absolutely not. At our donation locations, we promise to protect the value of the treasures that come our way thanks to you. To avoid the appearance of favoritism, our retail store employees are not allowed to set aside merchandise nor can they shop in their own stores. We promise to put the mission of Goodwill before ourselves, period.

Does Goodwill sell everything it receives from donors?

No, but we do try to find the highest use for every material dropped off at our donation sites. Although we've long been known as the "original recycler," these days we think of it as "up-cycling": finding new and better uses for things that would otherwise go to waste. Through an alliance with Dell Computer, for instance, we ensure that any donated computer equipment that can't be refurbished is responsibly salvaged, not shipped abroad and burned to extract precious metals. We're helping the cities and counties we serve reach their goal of zero waste while raising additional money by selling valuable scrap materials. In 2010 alone, for instance, we diverted 20 million pounds from our local landfills.

How can I help Goodwill?

We welcome volunteers in our stores, office and donation locations. [Learn how to volunteer](#). As a non-profit social enterprise, we also welcome the financial contribution of corporate and individual donors who believe in our mission. Here's [how your donation helps](#) and [how to donate money online](#).

Why should I give money to Goodwill?

Giving to Goodwill is an investment in the future of the Bay Area. We are helping people in the greatest need within our communities become self-sufficient, tax-paying citizens who contribute to the support of their families. (Some of these people may one day be your friends, neighbors or family members.) We are an engine of growth and entrepreneurship in the local economy, whose ripple effect strengthens families and communities. And we are preventing waste and reducing pressure on landfills as one of the Bay Area's biggest recyclers. Our hybrid social enterprise puts your money to work in amazing ways – with amazing results.

Do I pay sales tax in your stores?

No. Goodwill Industries of San Francisco, San Mateo and Marin Counties, Inc. holds 501c (3) status and is not allowed to collect sales tax — saving you money.

MARIN COUNTY HAZARDOUS AND SOLID WASTE MANAGEMENT JOINT POWERS AUTHORITY

Are all Goodwills the same?

No. Goodwill Industries International is a confederation of more than 160 semi-autonomous chapters in North America. Although all are committed to changing lives through the power of work, each serves local needs by developing programs and services specific to their communities. At Goodwill Industries of San Francisco, San Mateo and Marin Counties, we focus our efforts on folks in our local community with the highest barriers to employment, such as previous incarceration, homelessness, and substance addiction and language barriers.

Who started Goodwill?

Learn about [the history](#) of Goodwill Industries International and our local chapter. We're the third oldest chapter in the country, dating back to 1916.

Is Goodwill a religious organization?

No. We are not affiliated with any religion. We believe in the goodness of people and the transformative power of work.

Recommendation

Receive presentation and conduct question and answer session.

f:\waste\jpa\jpa agenda items\lrf 130807\goodwill.docx

Search

PEJU
NAPA VALLEY

DON'T MISS THE PEJU ANNUAL GRAPE STOMP!
SATURDAY AUGUST 24, 2013

Buy Tickets Here >



Sign up for newsletters | Mobile apps | Follow Us   

July 31, 2013 [Login](#) | [Create Account](#)

[< PREVIOUS](#)

Bedbug outbreak forces S.F. Goodwill to toss out donated goods

By Bay City News



[click to enlarge](#)

RELATED STORIES

Legislation would require disclosure of bed-bug infestations

By Joshua Sabatini

Entrepreneur keeps bed bugs out of your suitcase

By Sarah Gantz

Jane Kim gets down to business

By Joshua Sabatini

CAMILA BERNAL/SPECIAL TO THE S.F. EXAMINER

Goodwill identified a 20-square-foot bedbug infestation zone at its warehouse at 11th and Mission streets; no bedbugs have been found at its stores.

A bedbug scare has forced Goodwill Industries to shut down two Bay Area warehouses and dispose of loads of donated goods, a spokesman said Tuesday.

The infestation, which was confirmed at Goodwill's San Francisco warehouse by bug-sniffing dogs Monday, was confined to an isolated area of the 30,000-square-foot storage facility at 11th and Mission streets, said Tim Murray, director of brand and marketing for Goodwill in San Francisco, San Mateo and Marin counties.

Exterminators will tent and treat the affected area, approximately 20 square feet, in the coming days, he said.



Meanwhile today in Burlingame, bug experts are slated to inspect a warehouse at 1215 California Drive where bedbugs were reportedly spotted last weekend.

Goodwill has disposed of loads of donated goods that were stored near both areas, and steam-cleaned hundreds of pounds of garments, textiles and fabrics that were kept in the same facilities, Murray said.

"We're going way beyond what we have to for the health and safety of our team members and customers," Murray said. "This is a really unfortunate occurrence that has befallen us."

Murray said 15 boxes containing 40 cubic yards of donated goods — enough to fill a tractor-trailer — were removed from the Burlingame facility and thrown out.

"We're taking no risks," he said, adding that the outbreak could cost Goodwill hundreds of thousands of dollars in lost inventory and other expenses.

"This is an enormous financial hit for us," he said.

So far, no bedbugs have been detected in any of Goodwill's 21 retail stores throughout San Francisco, San Mateo and Marin counties, all of which remain open for business. Retail sales account for more than 80 percent of Goodwill's operations, Murray said.

However, the outbreak has interrupted Goodwill's nonprofit job-training services and could force the organization to dispose of tons of donated goods, depending on how much of the Burlingame warehouse — if any — is found to be infested, Murray said.

Regardless, he said, the organization will do whatever is necessary to protect the public.

"The bug stops here," he said. "We'll do whatever it takes to isolate the outbreak."

Murray said that anyone considering donating goods should never do so if they suspect their property is infested with bedbugs.

Anyone wishing to support the Goodwill financially can donate online at www.sfgoodwill.org.

[Other News archives »](#)

Tags: [Other News](#), [Bed bugs](#), [San Francisco Goodwill](#)



BAY CITY NEWS

 [Contact Us](#)



26



0



Favorite



Share

[← PREVIOUS](#) |

[NEXT →](#)

MARIN COUNTY HAZARDOUS AND SOLID WASTE MANAGEMENT JOINT POWERS AUTHORITY

Belvedere:
Mary Neilan

Date: August 7, 2013

Corte Madera:
David Bracken

To: Local Task Force Members

County of Marin:
Matthew Hymel

From: Steve Devine, Program Manager

Fairfax:
Garret Toy

Re: Updates from LTF Subcommittees

Larkspur:
Dan Schwarz

Currently there are three active subcommittees:

- EPR, Sharps and Pharmaceuticals Subcommittee
- JPA Long Term Funding Subcommittee
- Construction & Demolition/Asphalt Shingle Subcommittee

Mill Valley:
Jim McCann

In addition there is the:

Novato:
Michael Frank

- Advisory Subcommittee to the JPA Board's Zero Waste Subcommittee.

Ross:
Rob Braulik

Subcommittee members will be reporting back on progress they have made researching and addressing the issues at each LTF Meeting.

San Anselmo:
Debbie Stutsman

Recommendation

Receive reports from Subcommittees.

San Rafael:
Nancy Mackle

f:\waste\jpa\jpa agenda items\lrf 130807\subcommittee updates.docx

Sausalito:
Adam Politzer

Tiburon:
Margaret Curran

ROOFS TO ROADS

Paving the way to ZERO WASTE

WHY RECYCLE ASPHALT SHINGLES?

- Reduces landfill waste
- Reuses previously mined aggregate
- Supplies raw material to fabricate improved roads
- Increases the life of pavement
- Reduces dependence on virgin liquid asphalt & new aggregate

- learn more at -
marinsanitary.com

ROOFS TO ROADS
IS A PARTNERSHIP
BETWEEN
Marin Builders
Association,
McLeran Roofing,
Marin Sanitary &
Zero Waste Marin